



Advancing the Power of the Sun

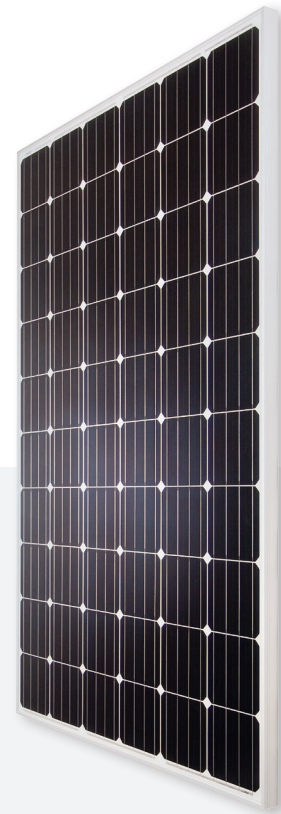
60 Cell Mono
270-285W

BVM6610M

0~+5W
Power Tolerance

17.5%
Maximum Efficiency

270-285W
Power Output Range



39.06 x 64.57 Inches
Silver Frame / White Backsheet



High Quality and Reliable Modules

- ◆ Withstand up to 5400 Pa snow load and 2400 Pa wind load
- ◆ 1000V DC (UL)
- ◆ 3 EL inspections per cell/module for defect-free consistency
- ◆ Type 1 fire-rating per UL 1703 edition 3
- ◆ High salt and ammonia resistance certified by TUV Rheinland
- ◆ 0-+5 W guaranteed positive tolerance
- ◆ Rugged design for long-term durability; passed extended reliability tests



Warranty

- ◆ 12-year product warranty
- ◆ 25-year linear power output warranty



Comprehensive Certificates for Products and Management

- ◆ UL 1703, IEC 61215, IEC 61730, CEC listed, MCS and CE
- ◆ ISO 9001 for Quality Management Systems
- ◆ ISO 14001 for Environmental Management Systems



Boviet Solar USA ◆ 1740 Technology Dr., Suite 205 ◆ San Jose, CA 95110

BOVIETSOLARUSA.COM ◆ 877.253.2858 ◆ SALES@BOVIETSOLARUSA.COM

Electrical Characteristics STC

	BVM6610M-270	BVM6610M-275	BVM6610M-280	BVM6610M-285
Maximum Power (Pmax)	270W	275W	280W	285W
Maximum Power Current (Imp)	8.64A	8.74A	8.82A	8.97A
Maximum Power Voltage (Vmp)	31.3V	31.5V	31.7V	31.8V
Short Circuit Current (Isc)	9.20A	9.30A	9.41A	9.48A
Open Circuit Voltage (Voc)	38.1V	38.6V	38.9V	39.2V
Module Efficiency	16.6%	16.9%	17.2%	17.5%
Power Tolerance	0~+5W	0~+5W	0~+5W	0~+5W
STC: AM1.5, Irradiance 1000W/m ² , 25°C				

Electrical Characteristics NOCT

	BVM6610M-270	BVM6610M-275	BVM6610M-280	BVM6610M-285
Maximum Power (Pmax)	199W	202W	206W	209W
Maximum Power Current (Imp)	6.90A	6.98A	7.04A	7.16A
Maximum Power Voltage (Vmp)	28.8V	29.0V	29.1V	29.2V
Short Circuit Current (Isc)	7.40A	7.51A	7.59A	7.65A
Open Circuit Voltage (Voc)	35.1V	35.6V	35.8V	36.1V
NOCT: AM1.5, Irradiance 800W/m ² , 20°C, Wind speed 1m/s				

Mechanical Characteristics

Solar Cell	Monocrystalline 6.14 x 6.14 inch, 60 (6 x 10) pcs. in series
Glass	High transparency, low iron, tempered glass 3.2 mm (0.13 inch)
Frame	Anodized aluminum alloy
Junction Box	IP67 rated, with 3 bypass diode
Output Cable	4 mm ² (EU)/12 AWG (US), 43.30/47.244 inch
Connector	MC4 compatible
Dimension	64.57 x 39.06 x 1.57 inch
Weight	40.79 lb

Thermal Characteristics

Pmax Temperature Coefficient	-0.44%/K
Voc Temperature Coefficient	-0.35%/K
Isc Temperature Coefficient	+0.04%/K
NOCT	113±3.6°F

Maximum Ratings

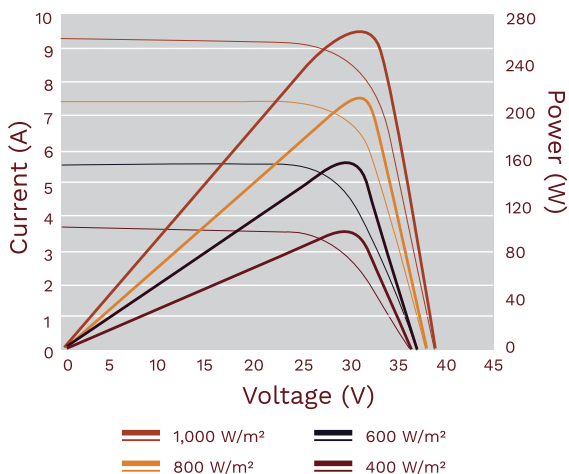
Operating Temperature	-40°F~185°F
Maximum Series Fuse Rating	15A
Maximum System Voltage	1000V DC

Packing Information

Pieces per pallet	26
Pallets per container (40HQ)	28
Pieces per container (40HQ)	728
Pallet weight/size	1177.3 lb/66.77 x 44.25 x 44.68 inch

Specifications in this datasheet are subject to change without prior notice.

I-V Curves at Different Irradiances (265W)
Test Temperature: 25°C



Irradiance: AM 1.5, 1,000W/m² (265W)

