

# THE HESOLAR DIFFERENCE

## THE HOFFMAN BROTHERS



DEAL DIRECTLY W/ OWNERS ERIC & DERRICK HOFFMAN.  
WE WORK DIRECTLY WITH OUR CUSTOMERS FROM  
**SALES TO INSTALLATION TO WARRANTY.**

ERIC HOFFMAN: 512.921.6762  
DERRICK HOFFMAN: 512.921.6763

SAVE OUR NUMBERS BECAUSE WE STAND BEHIND  
OUR PRODUCTS AND WARRANTIES.

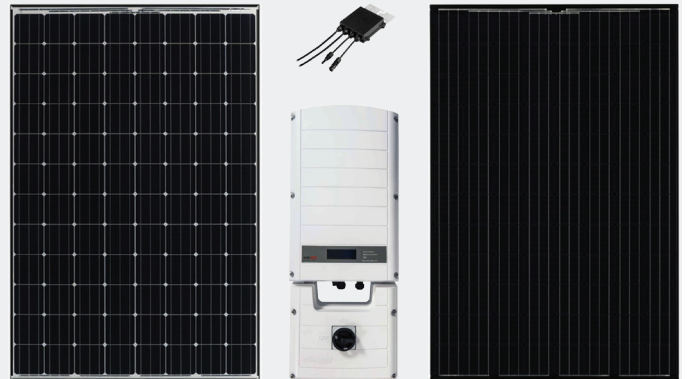
## PREMIUM MATERIALS

// LET'S REVIEW THE HESOLAR TEST ARRAY TO SEE WHAT  
SOLAR PANEL IS RIGHT FOR YOU.

// **ENPHASE MICROINVERTERS**

// **ALUMINUM** RACKING WITH INVISIBLE ENDS

// ENGINEERED SOLAR FLASHING AND ATTACHMENTS



## ENHANCED WARRANTY



// **HE SOLAR LLC 25 YEAR WORKMANSHIP WARRANTY.**

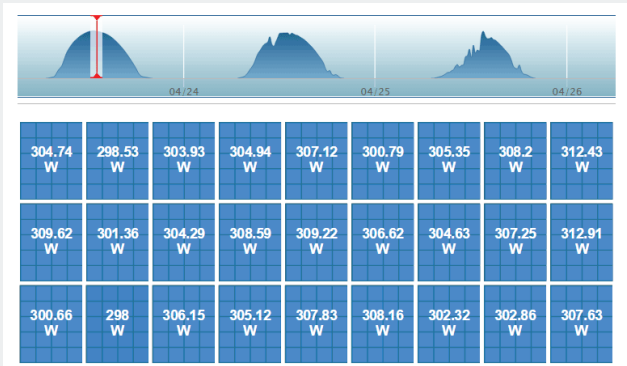
// **PREMIUM SOLAR PANEL WARRANTY.** REC, LG & PANASONIC SOLAR  
PANELS COME WITH A 25 YEAR WARRANTY.

// **ENPHASE INVERTER 25 YEAR WARRANTY.**

## MODULE-LEVEL MONITORING

MODULE LEVEL ELECTRONICS ALLOW YOU  
TO SEE THE PRODUCTION OF  
**EVERY SOLAR PANEL**

**MODULE-LEVEL MONITORING  
IS INCLUDED**



## ENHANCED AESTHETICS



**THE FOLLOWING AESTHETIC FEATURES ARE INCLUDED:**

- // **HIDDEN CONDUIT ON THE ROOF.** IF ATTIC ACCESS IS AVAILABLE, WE WILL HIDE THE CONDUIT.
- // **PAINTED CONDUIT.** ALL EXPOSED CONDUIT IS PAINTED TO BLEND IN.
- // **INVISIBLE RAILS.** WE USE INVISIBLE END CLAMPS TO KEEP THE RAILS UNDER THE SOLAR ARRAY!
- // **LEVELED ARRAY.** ROOFS ARE NEVER FLAT. WE UTILIZE 2-INCH L-FOOT SLOTS TO LEVEL THE ARRAY.

THE **#1 DIFFERENCE** BETWEEN HE SOLAR LLC & OUR  
COMPETITORS IS **THE QUALITY OF OUR WORKFORCE.**

EVERY **DESIGN & INSTALLATION** IS LED BY A  
**MASTER ELECTRICIAN & NABCEP SOLAR PROFESSIONAL.**

A LICENSED JOURNEYMAN OR HIGHER WILL  
BE **ON-SITE** AT ALL TIMES **GUARANTEED**

## MASTER - NABCEP GUARANTEE

