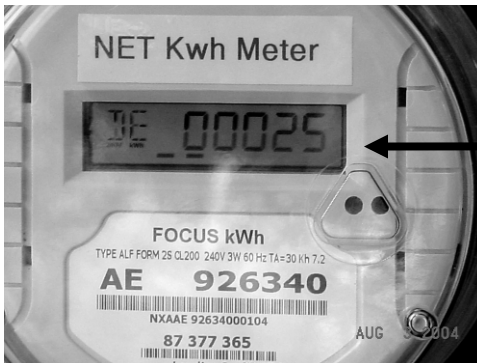




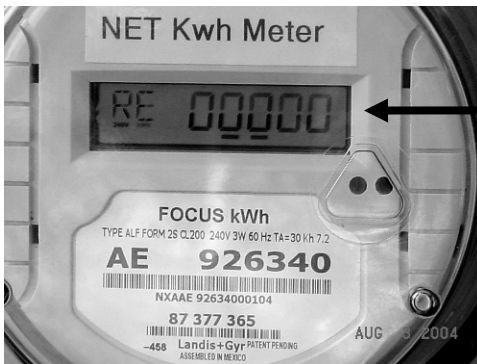
## Understanding Your New Meters

Congratulations on the installation of your solar system at your home! Because you now have a solar array, it was necessary to replace your standard electric meter with two new meters. The following information will help you to understand your new meters.



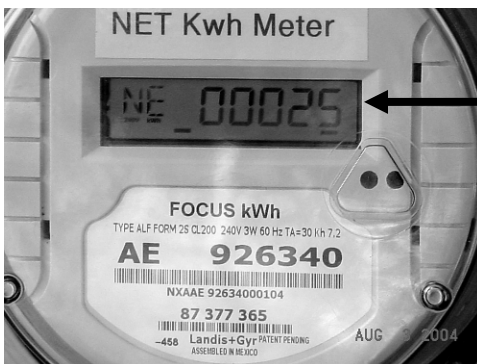
### Meter Read for Delivered Energy

DE (electricity your home used from the Austin Energy electric grid)



### Meter Read for Received Energy

RE (excess solar-generated electricity from your system that is fed into the Austin Energy grid)



### Meter Read for Net Energy

Net (the difference between the two). It is the net on which you will be billed each month.



### Solar PV Meter

**Solar meter** This meter shows the total kilowatt-hours (kWh) of solar-generated power from your solar system for the month.

Questions or Comments, please contact the Conservation Call Center at  
(512) 482-5346